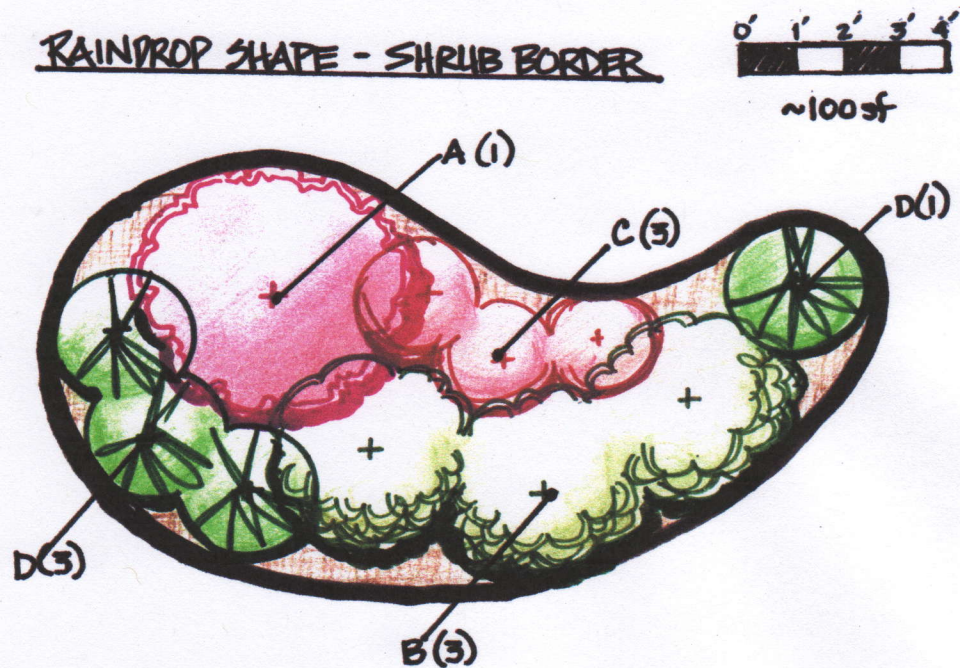


## Shrub Border Rain Garden

Sketch:



### Description:

This ~100 square foot design is intended for rain gardens with depths of 5 to 8 inches. The majority of plants selected are native to Ohio, or to the midwest.

Four different types of shrubs are arranged in this 100 sf garden so each season will have some interest. Selections include shrubs that bloom in spring or summer, have bright fall foliage, produce berries in fall/winter, have red winter stems, or are evergreen.

There are a variety of feature shrubs to choose from for Sun/Part Shade and for Full Shade. When selecting alternates, give consideration to choices that offer a different color, texture or seasonal interest than the other selections in the composition.

## Sun/Part Shade Selections - Shrub Border Rain Garden:

	LATIN NAME	COMMON NAME	LIGHT	MOISTURE	QTY
A	<i>Physocarpus opulifolius</i>	Coppertina Ninebark	○ ●	⋈ ⋈	1
B	<i>Cornus sericea</i>	Isanti compact Red Twig Dogwood	○ ●	⋈	3
C	<i>Itea virginica</i>	Little Henry Dwarf Sweetspire	○ ●	⋈ ⋈	3
D	<i>Thuja Occidentalis</i>	Danica Dwarf Globe Arborvitae	○ ●	⋈ ⋈	4

ALTERNATES:

11

A	<i>Corunus sericea</i>	Cardinal Red Osier Dogwood	○ ●	⋈	--
A	<i>Viburnum trilobum</i>	Redwing Cranberry Bush	○ ●	⋈ ⋈	--
A	<i>Ilex verticillata male</i>	Jim Dandy Holly	○ ●	⋈ ⋈	--
B	<i>Ilex verticillata female</i>	Red Sprite Holly	○ ●	⋈ ⋈	--
B	<i>Aronia melanocarpa</i>	Viking Black Chokeberry	○ ●	⋈ ⋈	--
C	<i>Aronia melanocarpa</i>	Iroquois Beauty Black Chokeberry	○ ●	⋈ ⋈	--
B,C	<i>Diervilla lonicera</i>	Dwarf Bush Honeysuckle	○ ●	⋈ ⋈	--
C	<i>Clethra alnifolia</i>	Hummingbird dwarf Summersweet	○ ●	⋈	--
C	<i>Cornus sericea</i>	Kelsey dwarf Red Twig Dogwood	○ ●		--

## Full Shade Selections - Shrub Border Rain Garden:

	LATIN NAME	COMMON NAME	LIGHT	MOISTURE	QTY
A	<i>Lindera benzoin</i>	Spicebush	○ ●	⋈ ⋈	1
B	<i>Hydrangea arborescens</i>	Hayes Starburst or White Dome	○ ●	⋈	3
C	<i>Itea virginica</i>	Little Henry dwarf Sweetspire	○ ●	⋈ ⋈	3
D	<i>Tsuga canadensis</i>	Gentsch White dwarf Hemlock *	○ ●	⋈ ⋈	4

ALTERNATES:

11

A	<i>Aesculus parviflora</i>	Bottlebrush Buckeye	○ ●	⋈	--
A	<i>Viburnum prunifolium</i>	Blackhaw viburnum	○ ●	⋈ ⋈	--
B,C	<i>Diervilla lonicera</i>	Dwarf Bush Honeysuckle	○ ●	⋈ ⋈	--

\* needs moist but well drained, slightly acidic soil

### Key:

LIGHT LEVEL	○ ○● ●	Full Sun Part Sun/Part Shade Full Shade
MOISTURE LEVEL	⋈ ⋈ ⋈	Dry Average Moist to Wet